

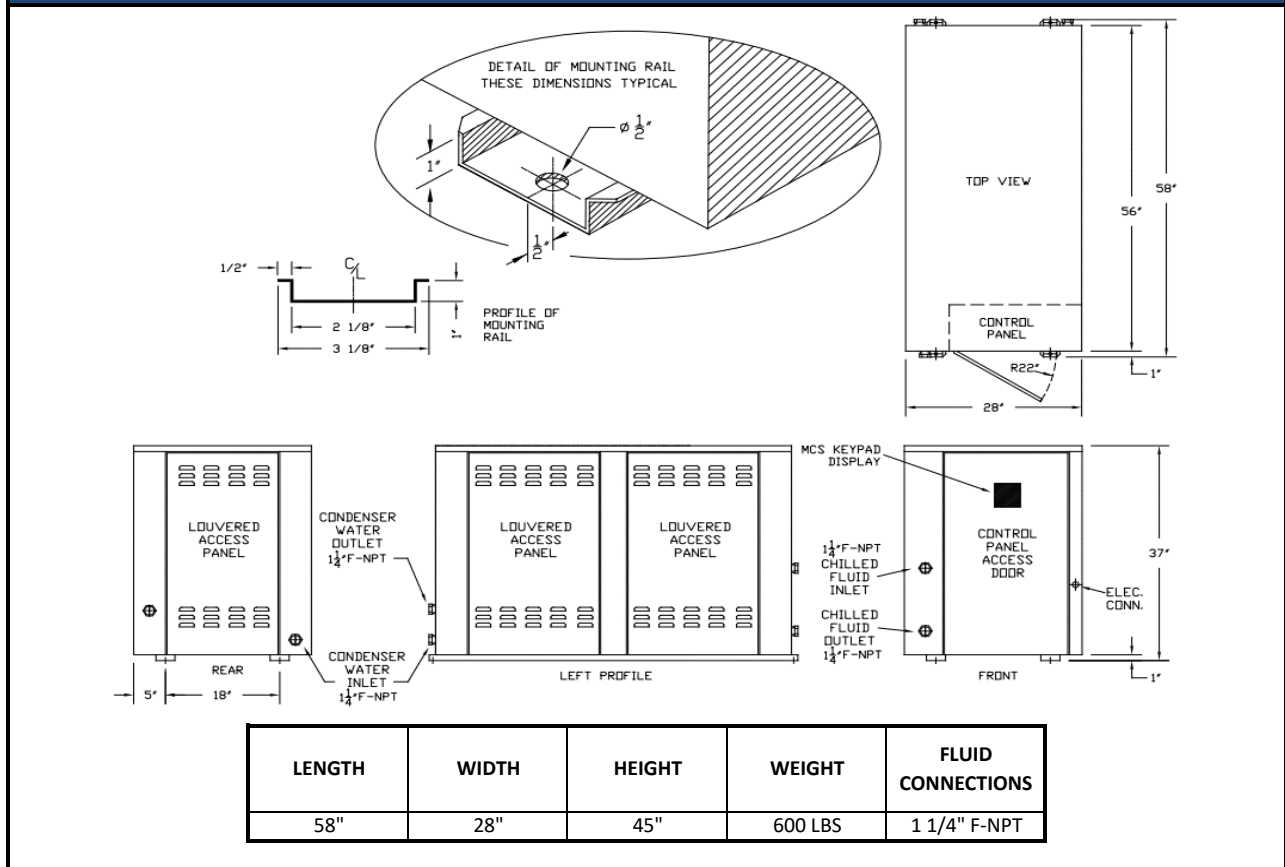


®

# PWC70S-ZD

## PACKAGED WATER-COOLED 8 HP SINGLE CIRCUIT DIGITAL SCROLL

### DIMENSIONAL DRAWINGS



PRODUCT PERFORMANCE INFORMATION										
REFRIGERANT	COMPRESSOR OPER. TEMP. SUCTION RANGE	LFT °F	70°F AMB		90°F AMB		105°F AMB		120°F AMB	
			TONS	EER	TONS	EER	TONS	EER	TONS	EER
R407C	25°F to 55°F	35	6.3	19.1	5.9	14.1	5.5	10.9	5.0	8.2
		40	7.0	21.0	6.6	15.6	6.1	12.1	5.6	9.1
		50	8.5	25.4	8.1	18.9	7.6	14.9	6.9	11.3
		60	N/A	N/A	9.8	22.9	9.2	18.1	8.5	13.9
		65	N/A	N/A	10.8	25.0	10.1	19.9	9.4	15.3
R404A	-10°F to 45°F	0	3.7	9.9	3.2	6.8	2.8	4.9	1.9	3.2
		10	4.6	12.1	4.1	8.5	3.6	6.3	3.0	4.4
		25	6.4	16.0	5.7	11.5	5.0	8.7	4.3	6.3
		40	8.6	21.0	7.6	15.0	6.8	11.4	5.9	8.4
		50	N/A	N/A	9.2	18.0	8.2	13.7	7.1	10.1
		55	N/A	N/A	10.1	19.9	9.0	15.0	7.8	11.1

**DRAKE REFRIGERATION INC**  
 2900 SAMUEL DRIVE  
 BENSALEM, PA 19020  
 (888) 289-7299  
[www.drakechillers.com](http://www.drakechillers.com)

\*ALL INFORMATION FOR REFERENCE ONLY



# PWC70S-ZD

## PACKAGED WATER-COOLED 8 HP SINGLE CIRCUIT DIGITAL SCROLL

STANDARD FEATURES	
FEATURE	BENEFIT
Listings	ETL 3046941, UL STD 1995, CAN/CSA STD, C22.2 No. 236
Micro Control Systems Controller	Open source, microprocessor built to operate in the HVAC/R industry
Controls	BMS, BAS communications, remote access, monitoring services
Stainless Steel Brazed Plate Evaporator	Corrosion resistant, fully insulated and selected upon requirements
Copeland Digital Scroll Compressor	Industry leader, long lasting compressor with digital technology for precision temperature control and modulation down to 40% capacity
Compressor Crankcase Heater	Prevents compressor damage caused by cold refrigerant on startup
Suction Accumulator	Protects the compressor from damage caused by liquid flood back by preventing liquid from entering the compressor
Water Flow Switch	Protects against process fluid freezing caused by pump failure
Coaxial "Tube-in-Tube" Condenser	Highly effective, compact heat exchanger with superior anti-fouling characteristics
Painted Galvanized Steel Metal Cabinet	Sturdy, corrosion resistance, professional appearance
Insulated Process Fluid Lines	Maximum thermal efficiency
Factory Tested	Ensures the unit meets the customer's performance designed criteria and arrives in working order
Full Refrigerant Charge	Hassle free and more efficient installation
NEMA 3R Rated Electrical	Indoor/outdoor use
Phase Monitors	Electrical protection for compressors

AVAILABLE OPTIONS	
OPTIONS	AVAILABLE
Extended Warranty	4 year extended compressor warranty
Electrical	Compressor fusing, disconnects, circuit breakers and more
Stainless Steel Pumps	1/3 HP to 25 HP on board pumps in multiple configurations & options
Fluid Piping Upgrades	Flow meters, pressure gauges, low flow bypass valves, and more
Head Pressure Control	Condenser Water Regulating valves
Other	Casters, service outlets, city water add-ons, heaters, water reg. valves etc.

*More options and customization available, contact factory for information: (888) 289 - 7299*

AVAILABLE MODEL NUMBER VOLTAGE REFERENCE
T3 (208-230/3/60) --- T4 (460/3/60)

PRODUCT INFORMATION											
MODELS AVAILABLE		COMPRESSOR			CONDENSER		RLA EA	LRA EA	MCA	MOP	RECIRC. TANK
R407C	R404A	MODEL	QTY	HP	QTY	CONNECTION					
PWC70S3-T3-ZD		ZBD58KCE	1	8	1	1 1/4" F-NPT	32.1	195	45	70	N/A
PWC70S3-T4-ZD							16.4	95	25	35	
PWC70S6-T3-ZD		ZBD58KCE	1	8	1	1 1/4" F-NPT	30.7	195	40	60	N/A
PWC70S6-T4-ZD							16.4	95	25	35	

**DRAKE REFRIGERATION INC**  
 2900 SAMUEL DRIVE  
 BENSALEM, PA 19020  
 (888) 289-7299  
[www.drakechillers.com](http://www.drakechillers.com)

\*ALL INFORMATION **FOR REFERENCE ONLY**