

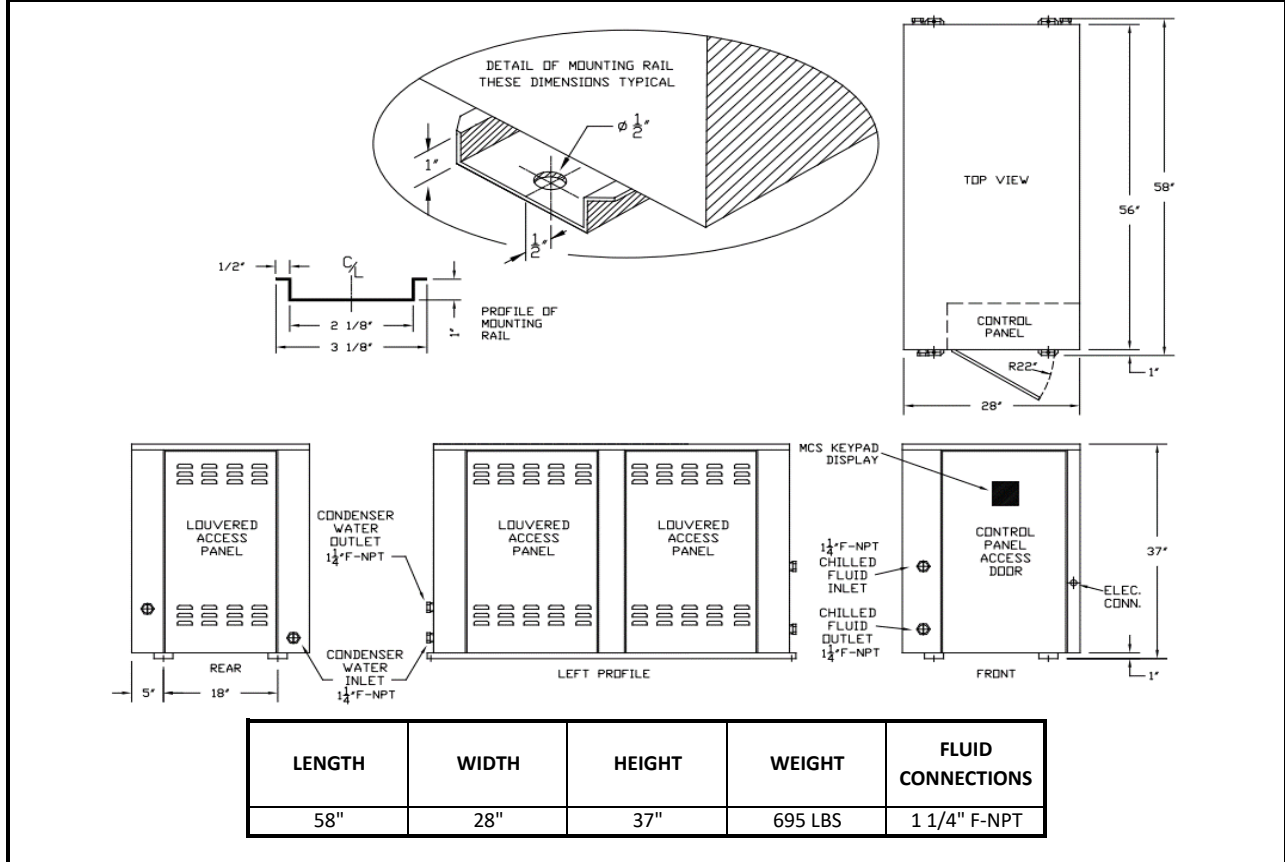


®

PWC90S

PACKAGED WATER-COOLED 10 HP SINGLE CIRCUIT SCROLL

DIMENSIONAL DRAWINGS



PRODUCT PERFORMANCE INFORMATION										
REFRIGERANT	COMPRESSOR OPER. TEMP. SUCTION RANGE	LFT °F	70°F AMB		90°F AMB		105°F AMB		120°F AMB	
			TONS	EER	TONS	EER	TONS	EER	TONS	EER
R407C	25°F to 55°F	35	8.6	19.4	7.9	14.2	7.3	11.1	6.7	8.4
		40	9.5	21.4	8.8	15.7	8.1	12.2	7.4	9.4
		50	11.7	25.4	10.8	19.0	10.0	14.9	9.2	11.5
		60	N/A	N/A	13.2	22.6	12.3	18.0	11.2	13.9
		65	N/A	N/A	14.5	24.5	13.5	19.6	12.4	15.3
R404A	-10°F to 45°F	0	5.0	10.2	4.4	7.2	3.9	5.5	3.5	4.2
		10	6.3	12.5	5.5	8.8	4.9	6.7	4.3	5.0
		25	8.7	16.6	7.6	11.8	6.8	8.9	5.9	6.6
		40	11.7	21.5	10.3	15.4	9.1	11.7	7.9	8.6
		50	N/A	N/A	12.4	18.4	11.0	13.9	9.5	10.3
		55	N/A	N/A	13.6	20.0	12.0	15.2	10.4	11.2

DRAKE REFRIGERATION INC
 2900 SAMUEL DRIVE
 BENSALEM, PA 19020
 (888) 289-7299
www.drakechillers.com

*ALL INFORMATION FOR REFERENCE ONLY



PWC90S

PACKAGED WATER-COOLED 10 HP SINGLE CIRCUIT SCROLL

STANDARD FEATURES

FEATURE	BENEFIT
Listings	ETL 3046941, UL STD 1995, CAN/CSA STD, C22.2 No. 236
Micro Control Systems Controller	Open source, microprocessor built to operate in the HVAC/R industry
Controls	BMS, BAS communications, remote access, monitoring services
Stainless Steel Brazed Plate Evaporator	Corrosion resistant, fully insulated and selected upon requirements
Copeland Scroll Compressor	Industry leader, long lasting compressor
Compressor Crankcase Heater	Prevents compressor damage caused by cold refrigerant on startup
Suction Accumulator	Protects the compressor from damage caused by liquid flood back by preventing liquid from entering the compressor
Water Flow Switch	Protects against process fluid freezing caused by pump failure
Hot Gas Bypass	Aids in the prevention of evaporator freeze ups and capacity control
Coaxial "Tube-in-Tube" Condenser	Highly effective, compact heat exchanger with superior anti-fouling characteristics
Painted Galvanized Steel Metal Cabinet	Sturdy, corrosion resistance, professional appearance
Insulated Process Fluid Lines	Maximum thermal efficiency
Factory Tested	Ensures the unit meets the customer's performance designed criteria and arrives in working order
Full Refrigerant Charge	Hassle free and more efficient installation
NEMA 3R Rated Electrical	Indoor/outdoor use
Phase Monitors	Electrical protection for compressors

AVAILABLE OPTIONS

OPTIONS	AVAILABLE
Extended Warranty	4 year extended compressor warranty
Electrical	Compressor fusing, disconnects, circuit breakers and more
Stainless Steel Pumps	1/3 HP to 25 HP on board pumps in multiple configurations & options
Fluid Piping Upgrades	Flow meters, pressure gauges, low flow bypass valves, and more
Head Pressure Control	Condenser Water Regulating valves
Other	Casters, service outlets, city water add-ons, heaters, water reg. valves etc.

More options and customization available, contact factory for information: (888) 289 - 7299

AVAILABLE MODEL NUMBER VOLTAGE REFERENCE

T3 (208-230/3/60) --- T4 (460/3/60) --- T5 (575/3/60)

PRODUCT INFORMATION

MODELS AVAILABLE	COMPRESSOR			CONDENSER		RLA EA	LRA EA	MCA	MOP	RECIRC. TANK
	MODEL	QTY	HP	QTY	CONNECTION					
R407C R404A										
PWC90S3-T3-Z	ZB76KCE	1	10	1	1 1/4" F-NPT	41.4	239	55	90	N/A
PWC90S3-T4-Z						19.2	125	25	40	
PWC90S3-T5-Z						13.8	80	20	30	
PWC90S6-T3-Z	ZB76KCE	1	10	1	1 1/4" F-NPT	41.4	239	55	90	N/A
PWC90S6-T4-Z						20	125	25	45	
PWC90S6-T5-Z						13.2	80	20	25	

DRAKE REFRIGERATION INC
 2900 SAMUEL DRIVE
 BENSLEM, PA 19020
 (888) 289-7299
www.drakechillers.com

*ALL INFORMATION **FOR REFERENCE ONLY**